



# *Larchmont Yacht Club*

## **THE ONE HUNDRED TWENTY-SECOND RACE WEEK**

Saturday, July 11, Sunday, July 12, Saturday, July 18, Sunday, July 19, 2020

### **CRUISING BOATS**

**For PHRF and Offshore One Design Racer-Cruisers and Non-Spinnaker Boats**  
Including *Expressly for Fun*

1<sup>st</sup> Amendment

To the

### **Sailing Instructions**

**8 COURSES AND MARKS**

8.3 See attached revised Addendum which includes new mark “R” to the list of government marks.

Mark Dailey

PRO

0720 July 12, 2020

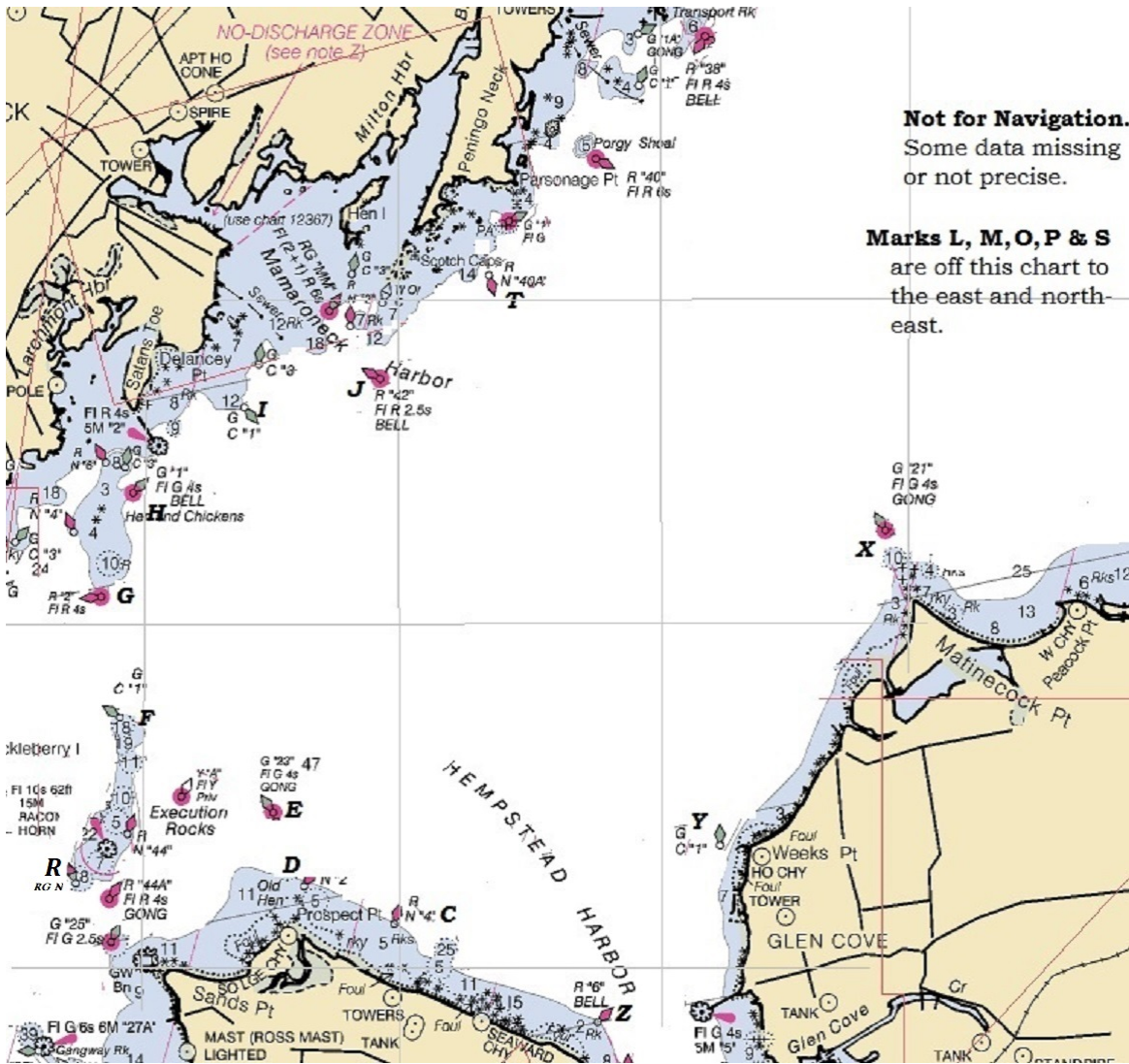
Time and Date posted

### Addendum – List of Marks

Letter Code	Approximate Location	Description	LAT	LON
			(Degrees, decimal min.)	
H - hotel	Hen & Chickens	G "1" Fl G 4s BELL	40° 54.8'	73° 44.1'
G - golf	South of Hen & Chickens	R "2" Fl R 4s	40° 54.2'	73° 44.3'
F - foxtrot	North of Execution Rock	G C "1"	40° 53.5'	73° 44.2'
R – romeo	SW of Execution Rock	RG N	40° 52.5'	<b>73° 44.6'</b>
E - echo	Prospect Point	G "23" Fl G 4s GONG	40° 52.7	73° 43.0'
D - delta	East of Prospect Point	R N "2"	40° 52.5'	73° 42.7'
C - charlie	East of Prospect Point	R N "4"	40° 52.2'	73° 42.0'
Y - yankee	Off Weeks Point (Long Island)	G C "1"	40° 52.7'	73° 39.5'
Z - zulu	Mott Point	R "6" Bell	40° 51.6	73° 40.4
X - xray	Matinecock Point	G "21" Fl G 4s GONG	40° 54.6	73° 38.2
O - oscar	Oak Neck Point	C "19" Green Can	40° 55.5'	73° 34.2'
L - lima	Lloyd Point	G "15" FL G4s GONG	40° 57.7'	73° 29.3'
S - sierra	Mid Sound	R "32A" FL R 2.5s Bell	40° 58.1'	73°32.8'
P - papa	Cows	R "32" FL R 6s Bell	41°00.2'	73°31.4'
M - mike	Off Manursing Island	R "36" Bell	40° 58.1	73° 38.8
T - tango	Off Peningo Neck	R N "40A"	40° 56.1'	73° 41.3'
J - juliett	Off Mamaroneck Harbor	R "42" Fl R 2.5s BELL	40° 55.5'	73° 42.2'
I - india	East of Larchmont Breakwater	G C "1"	40° 55.3'	73° 43.3'

In addition to the government marks the race committee may use one inflatable mark, which will be designated *mark "A" (Alpha)*. If the race committee uses mark "A" it will announce its approximate location on the VHF communication channel.

See also chartlet on following page



**Not for Navigation.**  
Some data missing  
or not precise.

**Marks L, M, O, P & S**  
are off this chart to  
the east and north-  
east.